



**Australian Government**  
**National Capital Authority**

NATIONAL CAPITAL AUTHORITY  
**Venues**

A versatile outdoor venue in the heart of the National Capital

# Commonwealth Place

## Location

- Parkes Place North, Parkes
- Southern shore of Lake Burley Griffin

## Landscape

- Grassed cupped square 100m×50m;
- Speakers Square 10m×10m
- Forecourt 120m×30m

## Access

- Car
- Bus
- Ferry
- Bicycle
- On foot

## Event Parking

- Various public carparks in the Parliamentary Zone

## Toilets

- Located at Commonwealth Place and nearby at Reconciliation Place

## Cupped Square Power

- 2×32A 3 phase, 4×20A 3 phase and 1×10A single phase

## Forecourt Power

- 1×32A 3 phase, 6×15A 3 phase
- 2×32A 3 phase and 4×15A single phase

## Water

- Taps located nearby on sides of venue

**Commonwealth Place** is an open space venue located in the heart of the National Capital on the southern shores of Lake Burley Griffin. The versatility and unique location of this venue makes it ideal for a wide range of events and festivals.

Commonwealth Place features:

- A 'cupped square' grass amphitheatre which includes Speakers Square (a paved area that provides a focal point for entertainment and ceremonies) and upper grass terraces.
- A large forecourt area with access to power and water, with magnificent waterfront views.

Commonwealth Place is suitable for a variety of events such as:

- Major outdoor performances;
- Music recitals;
- Dance performances;
- Corporate functions; and
- Festivals.

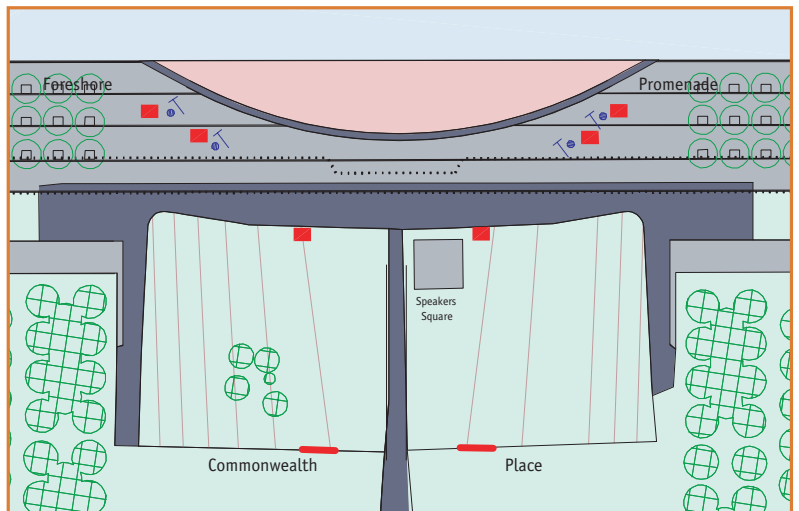
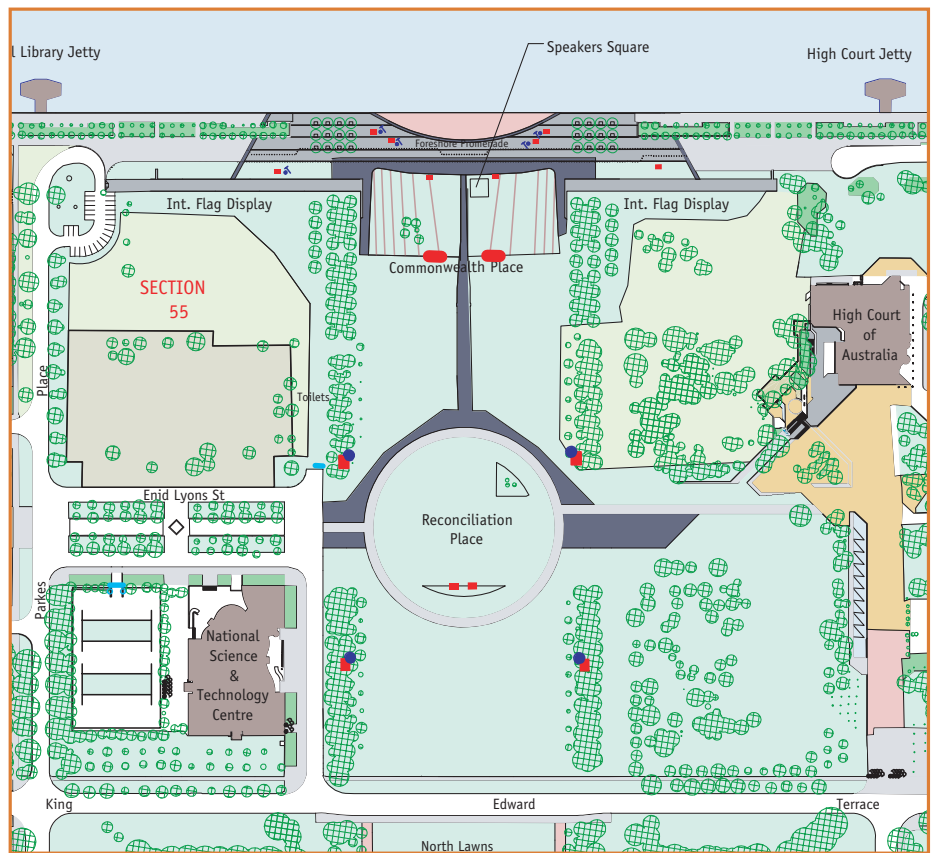
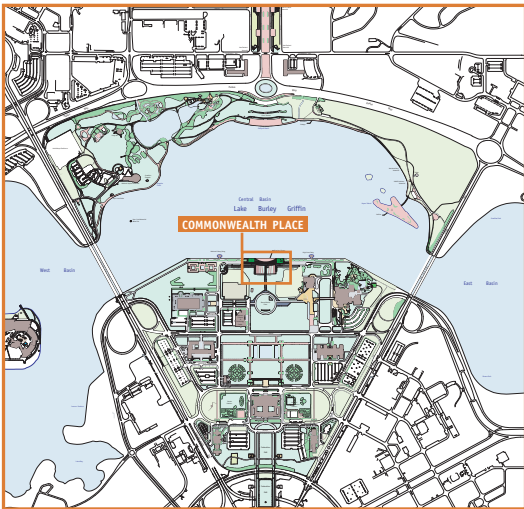
## Further Information

Contact the National Capital Authority's Venue Management Team to arrange for your next event to be held at Commonwealth Place.

**PHONE** 02 6271 2888  
**FAX** 02 6273 4427  
**E-MAIL** [events@natcap.gov.au](mailto:events@natcap.gov.au)  
**WEBSITE** [www.nationalcapital.gov.au](http://www.nationalcapital.gov.au)



A versatile outdoor venue in the heart of the National Capital  
**Commonwealth Place**



■ Power supply      ● Water supply/Tap